


Welcome to the world
of Modern Cursive handwriting!
Here you'll meet sea creatures,
monsters and pirates.



You might even find
some buried treasure!
This page is your passport –
so before you go any further,
fill in the information below.

Name: _____

Class: _____

Age: _____

Birthday: _____

Favourite food: _____

Favourite place: _____

Favourite activity: _____



Draw yourself here.

You have been
shipwrecked on
a treasure island.

Trace each join when
you have learned it, and
follow the steps to the
buried treasure.



as

if

no

hu

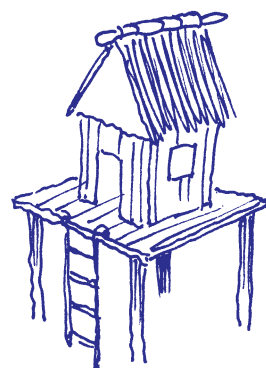
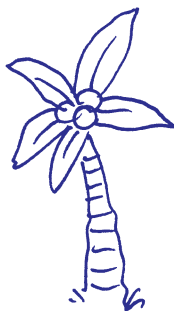
la

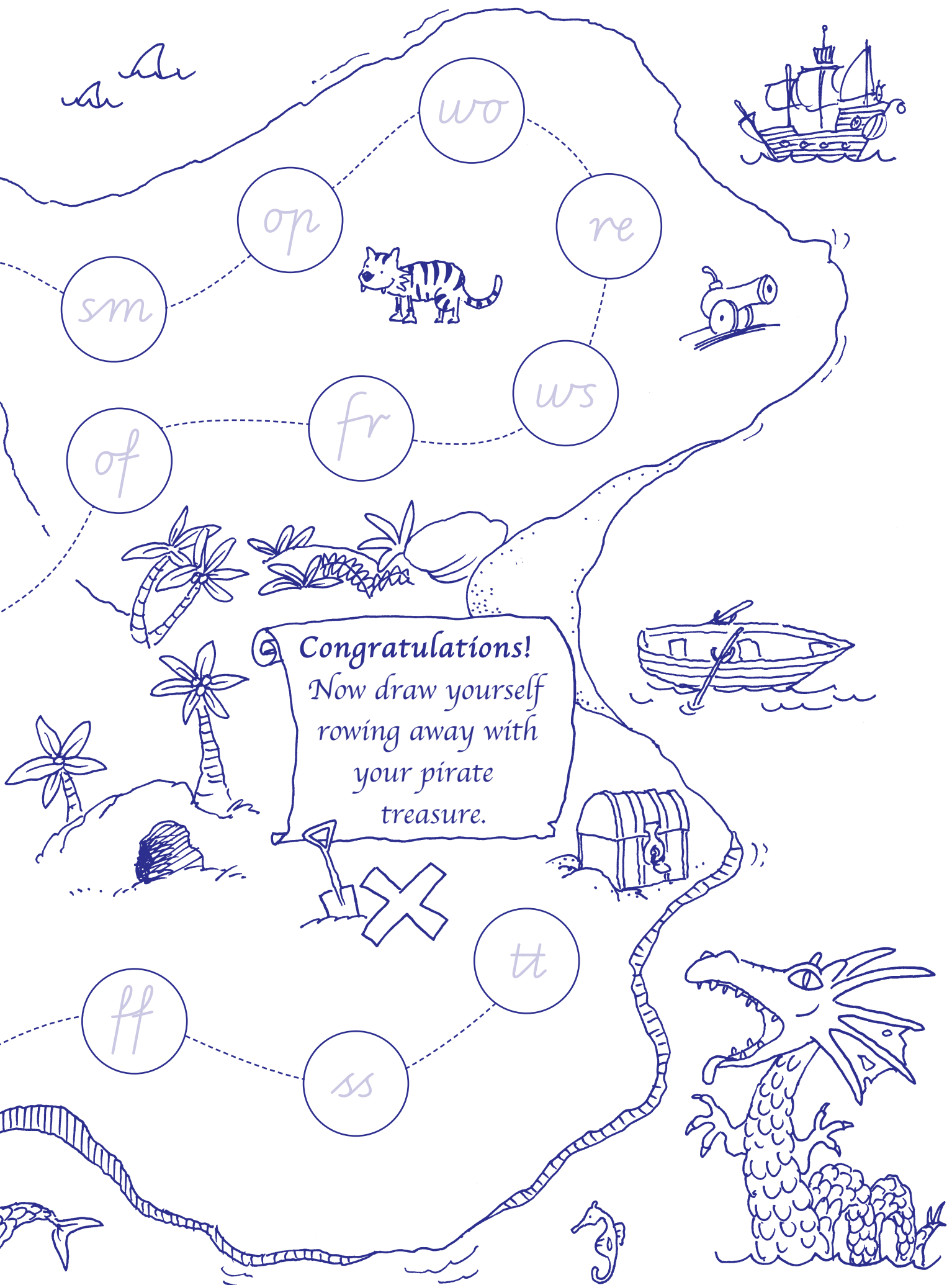
rg

pl

wh

Start
Here





Revision – Victorian Modern Cursive

Trace these capitals. Write the matching lower-case letters.

A B C D E F

G H I J K L

M N O P Q

R S T U V

W X Y Z

Trace the i family letters in one colour.

Trace the clockwise letters in another colour.

Trace the anti-clockwise letters in a third colour. Trace the u family letters in a fourth colour.



a b c d e f g h i

j k l m n o p q r

s t u v w x y z

Trace and copy.

1 1 1

2 2 2

3 3 3

4 4 4

5 5 5

6 6 6

7 7 7

8 8 8

9 9 9

10 10



.

,

!

.

,

,

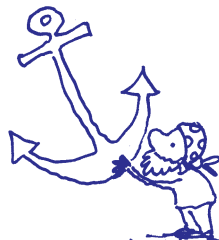
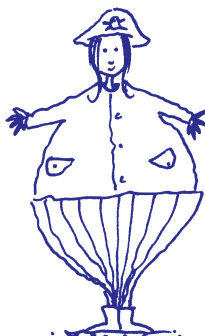
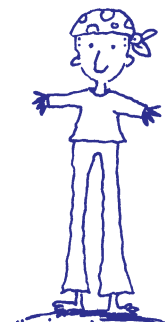
?

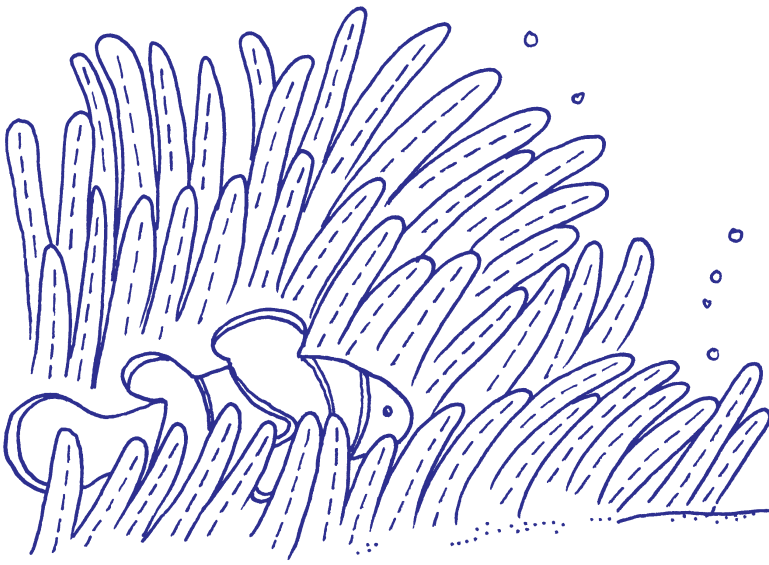
" "

Revision – Letter size and position

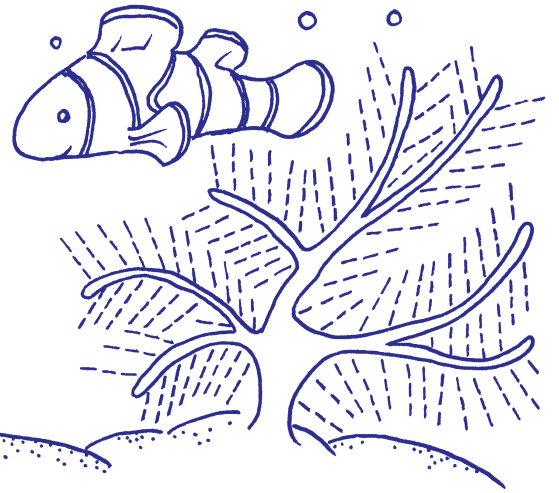
Look at the song below. Some of the letters are the wrong size, and some are in the wrong position. Rewrite it correctly.

A sAilor went to Sea, sea,
sea ^{TO} see what he Could see,
see, see And all that he couUld
see, See, see Was the bottom of
the deer blue sea, Sea, sea!





Revision – i family letters



Trace. Copy. Write the matching capital letter.

t i j l

Write some words you know that use mostly i family letters.
You can use the same letter more than once. The first one has
been done for you.

list

Mark the starting point on these letters in green. Trace them.
Draw a seahorse next to each one. Colour it to show where the
letter sits in the lines.



l t i j

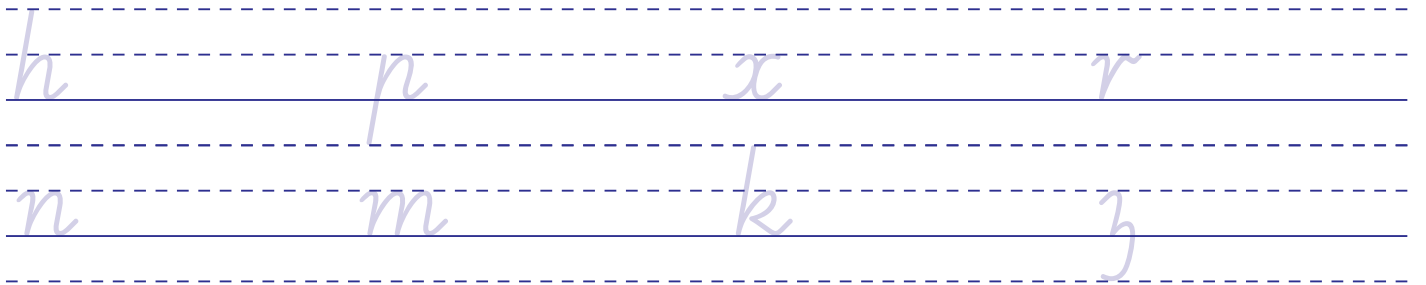
Revision – Clockwise letters



Find the clockwise letters in these patterns.



Trace. Colour the wedges. Copy.



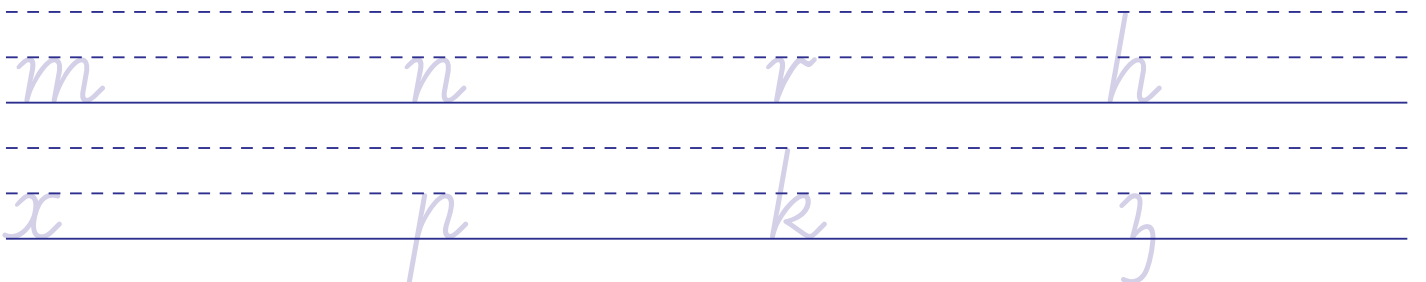
Write each clockwise letter in the correct row. Write its capital next to it.

head and body letters

body only letters

body and tail letters

Mark the starting point in orange. Trace, then copy.



Revision – Anti-clockwise letters

Trace. Circle the anti-clockwise letters.



a b c d e f g h i
j k l m n o p q
r s t u v w x y z

Write the capitals that match the anti-clockwise letters.

Handwriting practice lines (solid top and bottom lines with a dashed middle line) for writing the capitals that match the anti-clockwise letters.

Write the anti-clockwise letters that have a body only.

Handwriting practice lines (solid top and bottom lines with a dashed middle line) for writing the anti-clockwise letters that have a body only.

Write the anti-clockwise letters that have a body and tail.

Handwriting practice lines (solid top and bottom lines with a dashed middle line) for writing the anti-clockwise letters that have a body and tail.

Mark the starting point in purple. Trace, then copy.

Handwriting practice lines (solid top and bottom lines with a dashed middle line) for tracing and copying the letters q, f, g, o, s, e, d, a, c.

Revision – u family letters

Find the u family letters in this pattern.

u u

u u

u u

u u

u u



Write the capitals that match the u family letters.

Handwriting practice lines (solid top and bottom lines with a dashed middle line) for writing capital letters.

Write the u family letters that have a body only.

Handwriting practice lines (solid top and bottom lines with a dashed middle line) for writing lowercase letters with a body only.

Write the u family letters that have a horizontal exit.

Handwriting practice lines (solid top and bottom lines with a dashed middle line) for writing lowercase letters with a horizontal exit.

Mark the starting point in red, Trace, then copy.

Handwriting practice lines (solid top and bottom lines with a dashed middle line) for tracing and copying letters. The letters shown are u, v, w, y, and b.